

# aliplast®

ALUMINIUM SYSTEMS



100%  
MADE IN  
BELGIUM

CRAFTSMANSHIP ★ SUSTAINABILITY ★ INNOVATION



- 4** ALIPLAST - beautiful and sustainable living
- 5** ALUMINIUM - a quality statement
- 6** DESIGN - creative with aluminium
- 9** WINDOWS - more light, more happiness
- 21** DOORS - first impression
- 27** SLIDING SYSTEMS - a view of infinity
- 36** FOLDING WALLS - giga-gantic openness
- 37** CURTAIN FACADES - dynamics with glass
- 39** CONSERVATORIES - cocooning in style
- 47** OUTDOOR - the outdoors beckons
- 52** FACADE CLADDING - added architectural value
- 55** INTERIOR DOORS - dream collection for your interior
- 60** STRENGTHS - made with love, in Belgium

# Beautiful and sustainable living



Enter a world of aluminium craftsmanship and beauty. Where our people put their heart and soul into working on systems that make your home beautiful and sustainable. Functionally strong and aesthetically refined – yes, that too.

At Aliplast Aluminium Systems we keep our promises. Our windows, doors, conservatories, facades and more have been developed to meet today's housing needs. They combine the best features to enhance your quality of life. Sustainability is an important part of this. It's in our DNA and in our product. After all, our material insulates, is 100% recyclable and helps combat climate change.



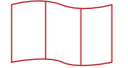






We also have a passion for innovation. We develop for tomorrow together. A team of experienced designers and engineers is ready to help professionals develop your residential project. Dedicated Aliplast distributors provide support. That makes choosing your new construction project or renovation much easier.

In the meantime, let us inspire you.

*Xavier Van Sebroeck, CEO Aliplast Belgium*

# Aluminium, a quality statement

With aluminium, you make a clear statement. You choose a durable and modern material with unique properties and advantages. For top quality and carefree enjoyment.

 <p>Diversity of styles</p>	 <p>Endless colour palette</p>	 <p>100% Belgian</p>
 <p>Recyclable product</p>	 <p>25 year Seaside colour guarantee</p>	 <p>Light &amp; naturally strong</p>
 <p>Burglar-proof</p>	 <p>Maintenance friendly</p>	 <p>Energy-efficient</p>

# Creative with aluminium

Minimalist, clean lines, distinctive appearance, delicate detailing... it is no surprise that the purest architectural pearls are created with aluminium.

Architecture with large windows, for example, for a boundless indoor and outdoor feeling. Or timeless facade cladding with vertical and horizontal profiles in various designs. Anything but average. Aesthetically and thermally in perfect balance.

Which is why architects like to be creative with aluminium. And Aliplast helps them develop 'the perfect fit'.



©Geco

# WINDOWS

---

more light,  
more happiness

Natural light, a pleasant temperature and tranquillity in the home are essential for a healthy living environment. Windows play the leading role in this. They let in light and create a soothing dynamic with the surroundings. The thermal and acoustic performance of windows and doors keep out cold, heat and noise and increase well-being. That's happiness.

Aluminium windows are light makers and good luck charms!



# MAX LIGHT

IMPRESSIVELY SLIM,  
MAXIMUM LIGHT



Are you a fan of large glass surfaces and narrow window frames? Then choose the Max Light. This window system consists of 4 different styles to suit your home. Fixed windows, upturned single or double windows, and tilt-and-turn windows. Invisible drainage makes this window even more beautiful.



MODERN



STEEL



DESIGN



INVISIBLE



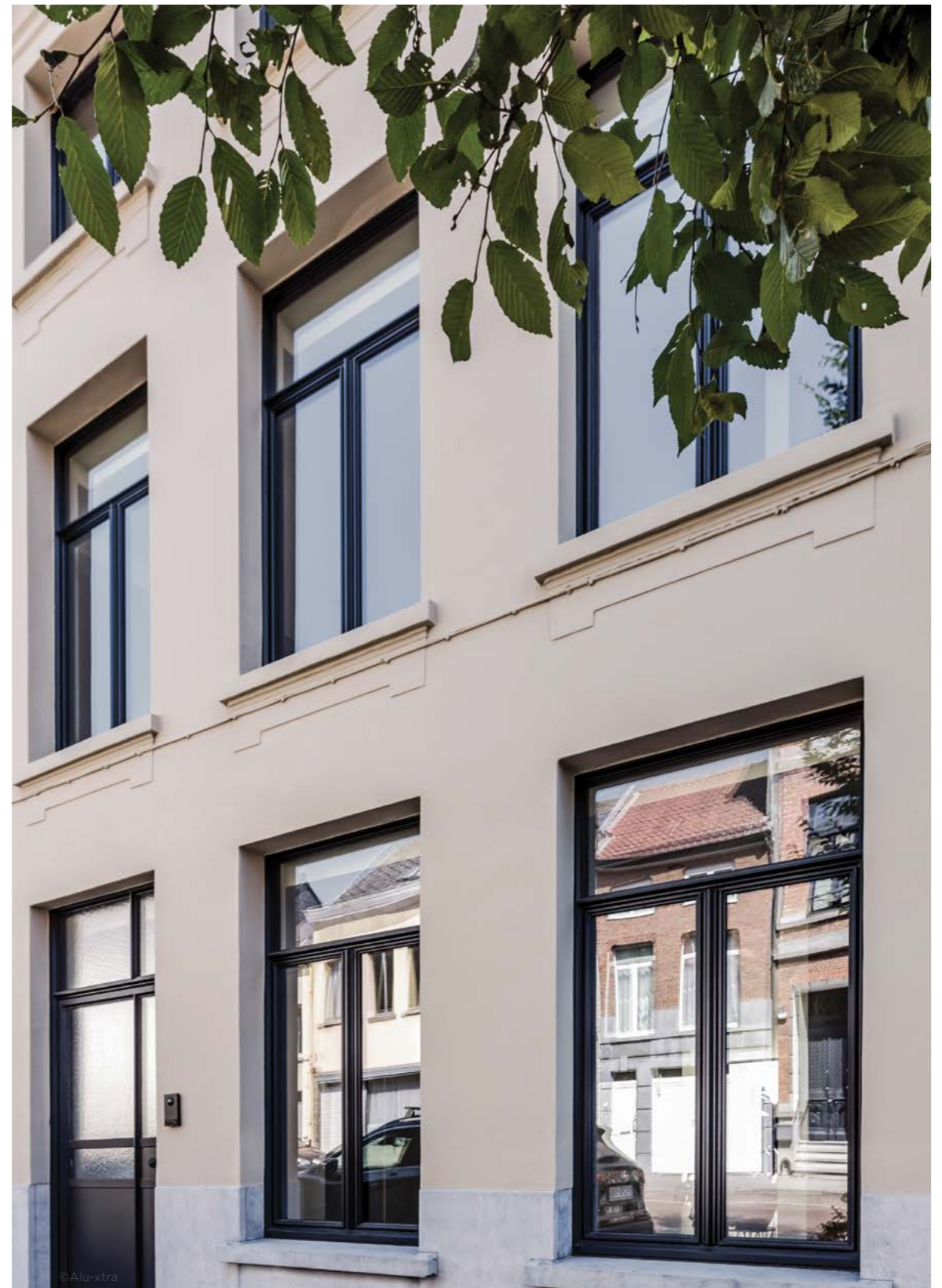
©Lukas De Groot / Kamo

# MAX LIGHT STEEL



Extend your architectural style to your windows

Max Light Steel are aluminium windows with a steel look. Ideal for lofts or industrial buildings, but also perfect in country villas. With the Steel version, cross timbers are often chosen to subdivide your window.



# STAR75

FOR EVERY  
ARCHITECTURAL STYLE

The latest technologies and innovations united in one window system.

The streamlined design of the Star75 in combination with the ultra-performance insulation makes this the ideal window system for low-energy homes, whether newly constructed or renovated.

Curved windows? That's also possible. Aliplast bends the aluminium profiles in its own workshop.

Choice of 3 styles: Modern, Luxus, Invisible



**25**  
YEARS  
COLOR  
LOCKED

25-year colour guarantee on more than 50 colours. Read more on page 64





# STAR75

Star75 invisible or hidden wing.  
What makes this window system unique is that fixed windows and windows that can open are now indistinguishable from each other.



Minimalist  
thanks to  
hidden wing

# STAR90

THE REAL  
COMFORT WINDOW  
THAT MAKES WARMTH  
AND SILENCE TANGIBLE

This window system excels thanks to its excellent thermal properties, making it particularly suitable for use in passive construction projects. A passive house is a highly insulated house with ideal comfort in winter (warm) and in summer (cool). It has a high-quality thermal shell, which means that it consumes very little energy.

The acoustic performance of the Star90 also greatly increases the comfort of the residents.



\*Dim.: 1230 mm X 1480 mm; UG: 0.6 W/m<sup>2</sup>K & PSI: 0.036 W/mK - profile combination: GT012-GT022(GTP)



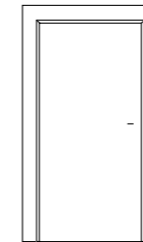
Suitable for passive construction  
U<sub>w</sub> = 0.80 W/M<sup>2</sup>K\*



# DOORS

## first impression

You get the first impression of a home the moment you open the door. Which is why Aliplast has different doors in a wide range of designs. The opening wing can be made of glass or an aluminium panel or a combination of both, according to your own design. Choose invisible hinges if you want an extra streamlined look inside too.



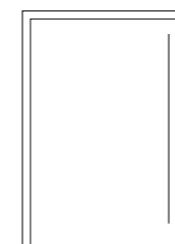
### OVERLAY DOOR

Door in which the opening wing rests on the frame.



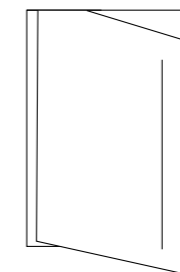
### SMOOTH DOOR

Modern solution in which the opening wing is in line with the door frame. So, there is no difference in level, either on the inside or outside.



### XL MAGNITUDE DOOR

An architectural door where the decorative panel is on top of the wing, and everything looks streamlined. The magnet system ensures that your door doesn't jam when the sun shines on it.



### PIVOT DOOR

Unique architectural pivot door in which the invisible integrated hinges in the floor and ceiling ensure that the door rotates around its vertical axis.



# DOORS



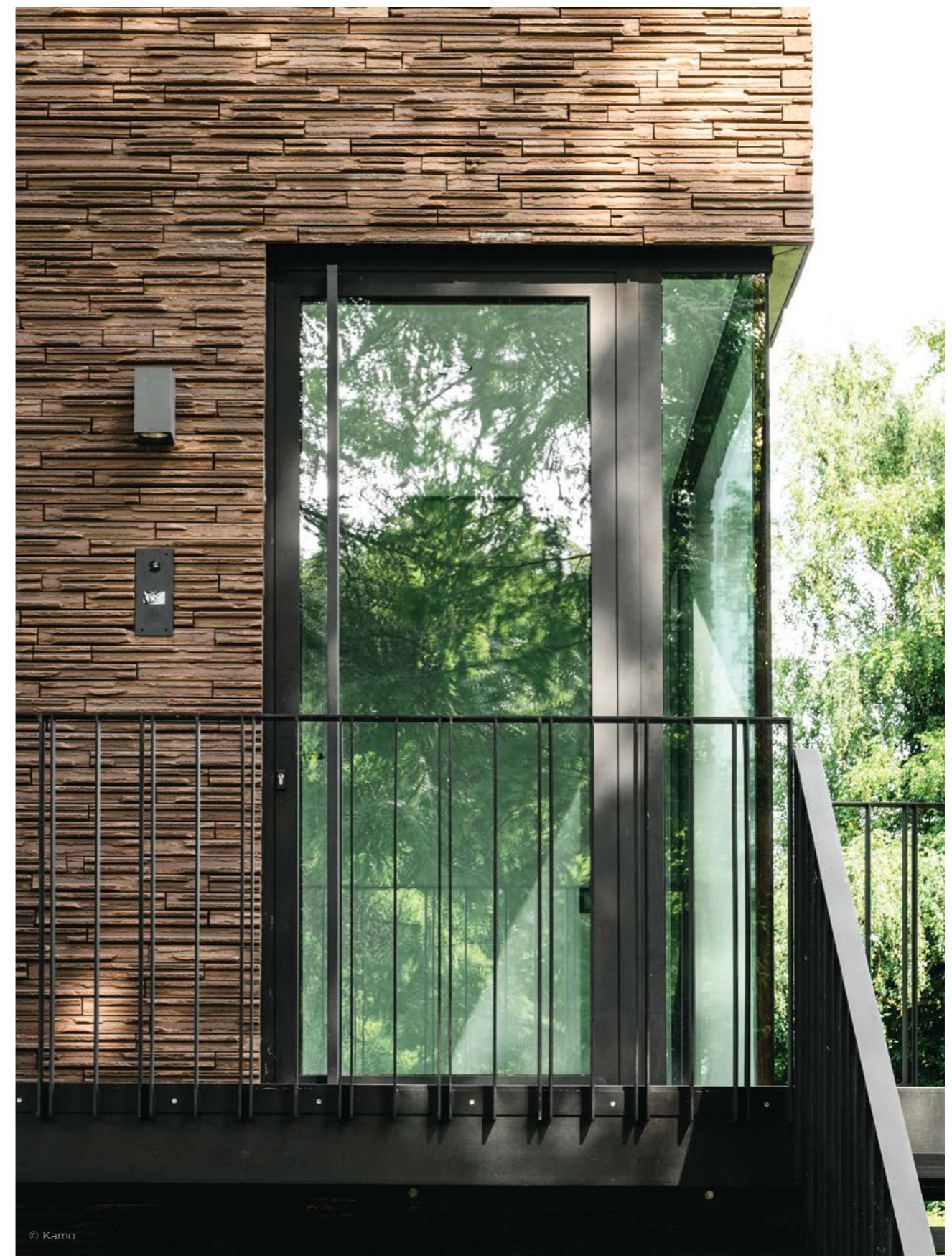
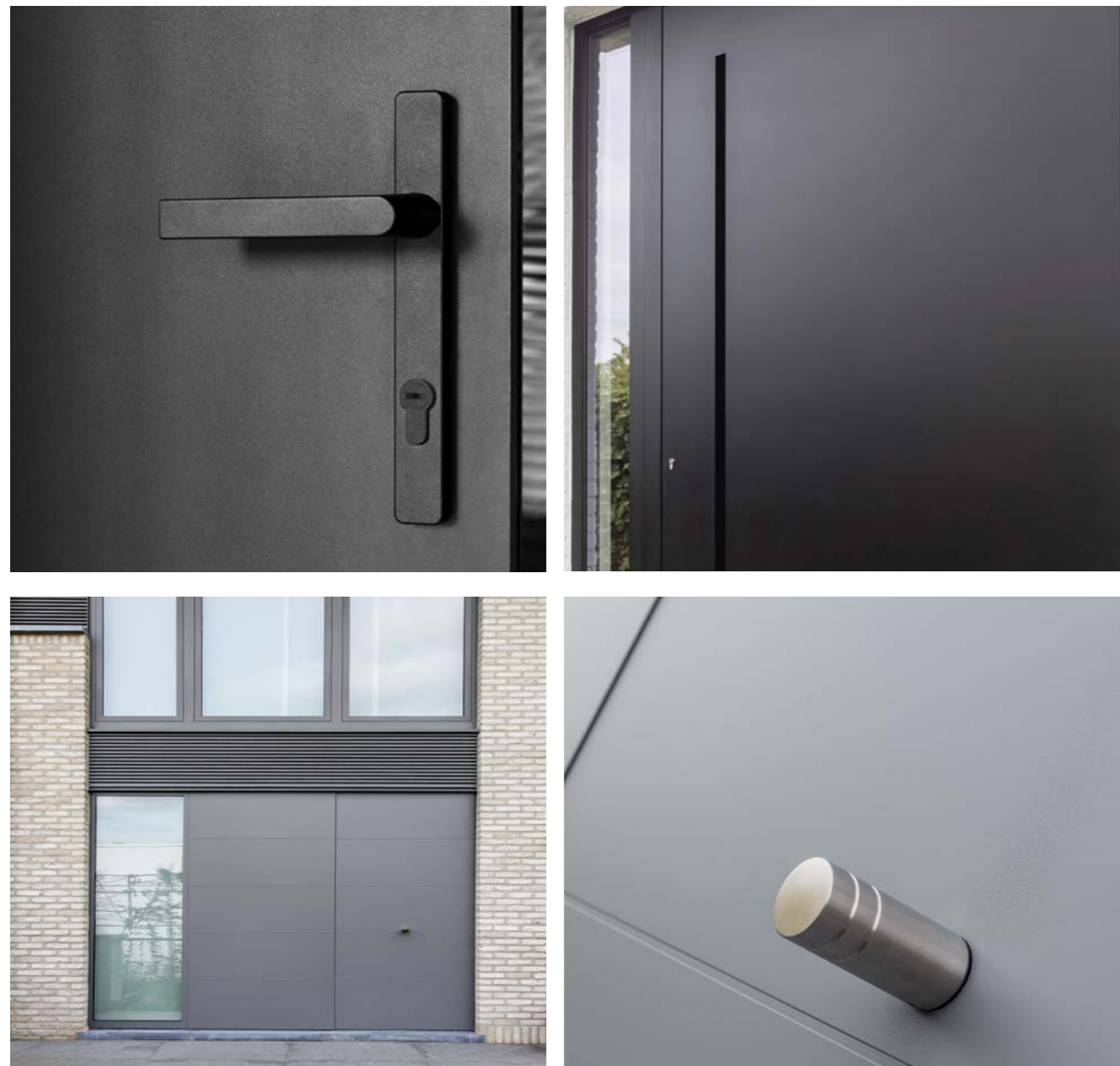
Architectural  
pivot door with  
invisible hinges



# DOORS

A door handle or door pull, an important detail. From the permanent collection or custom made. Aliplast paints the door handles the same colour as your door. We like everything to be perfect.

And because safety is also important, all the exterior doors have a multi-point lock. It is still possible to open the door with a key, but automated doors with a keypad, mobile phone or finger scan are becoming increasingly popular.



# SLIDING WINDOWS

---

an infinite  
view

A minimalist look for your home and a sublime view outside? Sliding windows will do the magic. So that you can enjoy more light, more space, more openness. There is an Aliplast aluminium sliding window for every lifestyle need. Universal, open corner, recessed sill, minimalist profiles... everything slides easily.

A blissful indoor-outdoor feeling - we wish you the same!



# VG500

UNIVERSAL  
SLIDING WINDOWS  
FOR NEW BUILDINGS  
AND RENOVATION

The VG500 is multi-usable for different house styles and satisfies all the contemporary requirements relating to thermal insulation values.

Choose a monorail if you want a narrower window frame, giving you a greater incidence of light. Or opt for a duorail in which the fixed and movable parts are in symmetry. The aesthetic highlight is a flat sill where the floor inside and outside is at the same height, with no step. And very wheelchair friendly.

**THIS VG500 IS ALSO AVAILABLE IN A MAXLIGHT VERSION WITH SLIMMER PROFILES.**



© Decaro / Nick Cannaearts



© Alu-xtra



© Kamo

Flat  
sill

# ULTRAGLIDE

THE ULTIMATE  
SLIDING WINDOW  
IN LARGE SIZES

A room with a view, that's exactly what you create with the ultra-large Ultraglide sliding window. Opt for the lifting foam system if you want the sliding 450 kg wing to slide ultra easily too.

**THIS ULTRAGLIDE IS ALSO AVAILABLE IN A  
MAXLIGHT VERSION WITH SLIMMER PROFILES.**





# ULTRAGLIDE

An open angle of 90°: it's possible with this Ultraglide sliding window. No window profile on the corner, an open view outside!

You can choose between a monorail, duorail or even trirail where you slide open 2 parts, one behind the other.

Safe? Absolutely. The Ultraglide and VG500 are RC2-certified for burglary prevention.



Big  
Bigger  
Biggest

© Alu-xtra

# MINILINE

DESIGN IN MINIMALISM

Miniline is like a sliding glass wall. All the aluminium profiles are built into the floor, ceiling and wall. What remains: only the vertical aluminium profile, which is just 2cm wide. Thermally insulated.

Can be made up to 4 metres high. Your home and the space around it become one.



# PANORAMA

GIGA-GANTIC OPENNESS

With a Panorama folding wall, you slide all the parts open to 1 side or from the middle to both sides. No fixed part is left, so that your room becomes an open space. Want to lock your pool house? This glass harmonica wall works perfectly.



# MC WALL

DYNAMIC CURTAIN WALL

If you are looking for an extremely large window that exceeds the limits of our normal windows, a curtain wall is the ideal solution.



# CONSERVATORIES

---

## cocoon in style

Joie de vivre: that's what we introduce into your life with an Aliplast conservatory. The beauty, the comfort and the constant connection with outside create an instant feeling of happiness. Enter a space that allows you to immerse yourself in the surrounding nature, season after season. A meeting space, a place to recharge your batteries, a home office... a conservatory as an extension of your home is the sublime decor that meets all your needs.

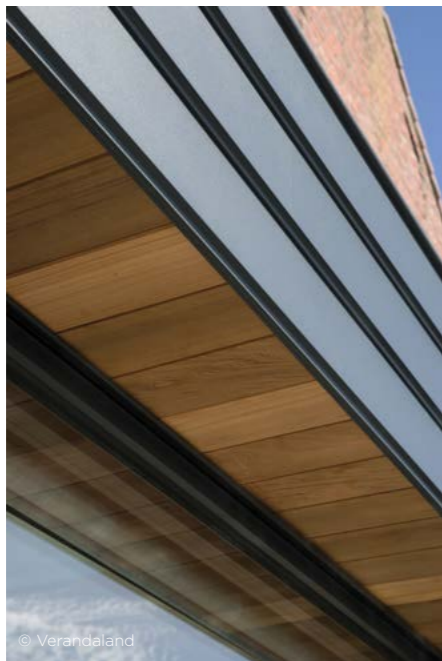
A world of possibilities opens up to you. Feel it for yourself.



# Space in which to **MEET**



# Space in which to **RELAX**



A conservatory is an excellent place for relaxation. To relax and find serenity after a hard day.

Enjoy the sun with the sliding windows open or watch the snow with the windows closed. Your Aliplast conservatory is thermally insulated, making it a wonderful place to spend time every day. It is an extension of your home that provides an instant feeling of happiness, season after season.

You decide what your conservatory looks like. Classic or modern? It's always cosy.



# Space in which to **ENJOY**



Because you can look up at the sky. And see the sun or the stars. It feels like you're outside, but you're sheltered. Beautiful furniture, soft cushions, fine interior design items: they can stay there all year round without getting soiled.

Enjoying your conservatory means enjoying nature. Aliplast also thinks of that. Aluminium is 100% recyclable, so no aluminium ends up in the landfill. A conservatory is best combined with Star65 or Star75 windows or a VG500 sliding window. Aluminium systems for which Aliplast has been awarded a Silver Cradle to Cradle certificate. So, they contain no harmful substances: good for you and good for the environment.

Choose from a wide range of colours and enjoy a standard 15-year colour guarantee or a 25-year guarantee on more than 50 colours. Ask our Aliplast distributors. You can find them on our website: [www.aliplast.com](http://www.aliplast.com).



# OUTDOOR

## holiday in your garden

Create a holiday feeling in your home. With a pergola or louvre roof, you can enjoy beautiful days from the first day of spring until well into autumn. It offers you shelter when it rains or cool shade in the middle of summer. Our glass sliding systems protect you from the wind without obscuring the view of your garden. A moment for yourself or a party with friends is never far away.

Driven by innovation and with a passion for beauty, let us introduce you to our outdoor options.





# SOMNIUM

TRENDY PERGOLA  
WITH SLATS OR GLASS  
AS AN EYE-CATCHER IN  
YOUR GARDEN



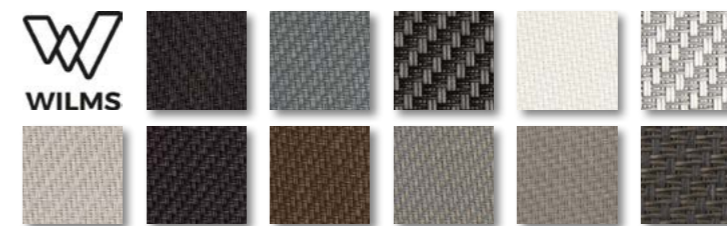
A pergola with louvres that perfectly matches your home. Attached to the facade or free-standing in the garden. You can open and close it with the remote control. You choose: give the sun complete free play, tone down the sun's rays a little or enjoy complete shade. When it rains, the louvres close automatically. Yes, with this minimalist and streamlined Somnium you hardly need to lift a finger.

Space to  
**EXPERIENCE**

# SOMNIUM & GLASS GLIDE



Design your pergola the way you want it. The Somnium can be fitted with a roof in louvres or in glass. Or one linked to the other. If you want extra protection against the wind, go for a Glass Glide glass windbreak or for the sunscreens that slide down into the support posts. You can choose them in a colour that matches your Somnium. Are you the romantic type? Then the built-in LED lighting creates a pleasant vibe in the evening.



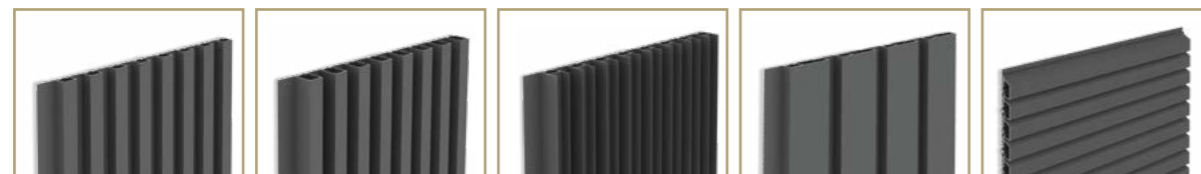
Space to  
**PERSONALISE**

# DECO WALL

YOUR HOME IN A CHIC  
AND TRENDY LOOK WITH  
THIS CLADDING



The aluminium Deco Wall facade cladding is the favourite of architects as a finishing touch for modern homes. Contemporary, stylish and sustainable through and through. The facade cladding is constructed using a simple click system with vertical or horizontal profiles in a range of designs. The invisible attachment and the straight lines give your home a streamlined look. Choose from 4 finishing profiles for vertical placement and 1 for horizontal placement. You can also use it to cover doors and gates.



NARROW 2 CM DEEP    NARROW 4 CM DEEP    OPEN U-PROFILE    WIDE 2 CM DEEP    HORIZONTAL



# INTERIOR DOORS

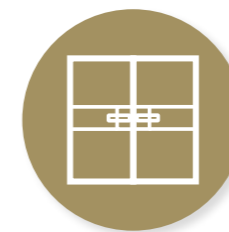
sublimely stylish  
living comfort

IDA - Interior Doors Aluminium.

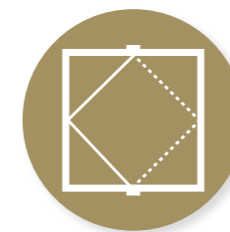
Synonymous with minimalist interior doors and walls that envelop and fill your interior with atmosphere, character and cosiness. The unique finishing touch. With IDA, you invite daylight into your home. Flexibility is the key, because you can combine single, double, pivot doors and sliding doors with fixed glass walls.



SINGLE DOORS



DOUBLE DOORS



PIVOT DOORS



SLIDING DOORS



INTERIOR WALLS



# IDA DOORS

AN OPEN AND  
STYLISH SENSE OF  
SPACE AND PRIVACY



Space and  
**LIGHT IN YOUR HOME**



# IDA DOORS



IDA doors are unique glazed aluminium interior doors that add extra cachet to your interior. These are minimalist interior doors that, thanks to their clean lines, create a distinctive look.

You choose your own subdivision: an industrial look with more compartments or a streamlined look with no intermediate profiles. In the IDA pivot door, the pivot system is incorporated into the bottom profile. This way, the floor never has to be cut and you avoid the risk of damaging your underfloor heating, for example. You can choose between a floating pivot door or one with a frame.

Thanks to the extreme flexibility of the IDA system and the options of combining revolving doors or sliding doors with fixed walls, you decide how your interior will look.



MODERN RAIL



INDUSTRIAL RAIL



# OUR STRENGTHS

---

made with love  
in Belgium



No need to search too far. Aluminium window and door profiles from Aliplast are top-quality materials! 100% Belgian, since 1984.

At our development and production facilities in Lokeren (Belgium), our dedicated professionals work on the aluminium systems of tomorrow in our Centre of Excellence. All under one roof. A strategic choice that enables us to deliver quickly and perform constant quality control.

At Aliplast, long aluminium profiles are pressed, given a protective layer, painted in the colour of your choice and fitted with thermal insulation: durable all the way.

## The Aliplast distributors do everything for you

---

Who help you choose the right window system? Our Aliplast distributors. Who provide you with a quote? Our Aliplast distributors. Who make your windows with expertise? Our Aliplast distributors. Who install the windows in your home? Our Aliplast distributors.

And our Aliplast distributors are not just nice people. They are also true craftsmen, trained by Aliplast and with years of experience. They listen to your instructions, consult with architects and ensure that your windows and doors are installed perfectly and safely.

**Go to our website, [Aliplast.com](https://www.aliplast.com), to find a distributor near you.**

# Together towards



## Aliplast plants a forest

On Nature Day, Aliplast planted 4 hectares of new forest in Lokeren. By planting these 3,500 trees, we are contributing to the natural resources of the region, which is home to several very rare animal species.

Our heart for sustainability therefore beats not just for the company itself, but for every initiative – no matter how small – that helps make our planet sustainable.



# a sustainable future

The secret of sustainable building is – yes – aluminium. Which is logical, because aluminium is a sustainable product that can be recycled again and again with no loss of quality and no waste.

Aliplast was awarded a Silver Cradle-to-Cradle Certificate for a wide range of aluminium systems and that doesn't happen for nothing. It requires the following 5 conditions to be met:



1. There are no harmful products in our systems. Not in the aluminium and not in the thermal insulation materials.
2. Because aluminium is 100% recyclable, the scrap is melted down and transformed into new profiles. The energy required for this is only 5% compared to the energy for new aluminium billets.
3. Our solar panels supply us with green electricity and our CO2 emissions during production are 100% compensated.
4. We also opt for “less” when it comes to water and chemicals.
5. Aliplast provides its employees with social benefits, has won the ‘Inclusive Business’ award, monitors the fairness and sustainability of its suppliers and supports charitable causes.

But sustainability also means enjoying your strong, stylish windows for a lifetime. Because aluminium is resistant to all weather conditions. And in terms of maintenance too, an occasional clean with soap and water is sufficient. Moreover, you use less energy thanks to the excellent thermal insulation.

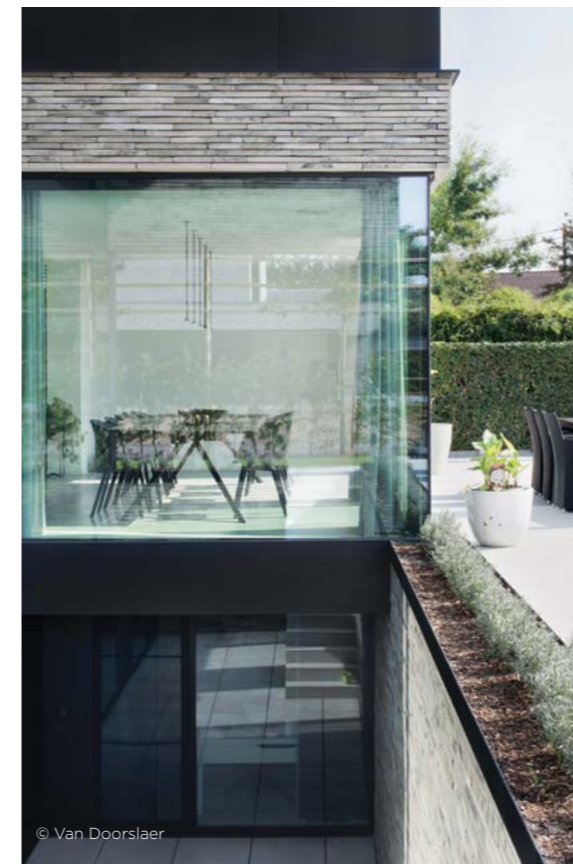
**Opting for aluminium windows from Aliplast means opting for sustainability.**



# 25-year colour guarantee, that's unique

You can enjoy a unique 25-year colour guarantee on Aliplast's complete T - TC - PT - MT colour range. With a 'Qualicoat Seaside' label on top of that. This guarantees excellent colour performance, even at sea where the salty wind is extra stressful for your aluminium profiles. But any other colour of your dreams is also available. You receive a 15-year colour guarantee as standard.

And because we have 3 powder coating installations at Aliplast, we have full control over the process and these guarantees are a promise!



© Van Doorslaer

## Matte, glossy or textured

We powder-coat your aluminium windows and doors in the colour of your choice. You decide whether they are given a matte, glossy or granulated look.

## Bicolour

You want the exterior colour of your windows to match your facade. But for the inside, would you like a colour that matches your interior? Then choose bicolour windows and Aliplast will powder-coat the inside and outside of your windows in two different colours.



© Desender



© Decaro

## Anodisation

If you like the original aluminium structure, you can have your windows anodised. They are then dipped in a chemical electrolytic bath and given the colour of your choice in a metal oxide bath. Very trendy and stylish!

# Like to know more?


# Go to [aliplast.com](https://aliplast.com)

Find technical explanations about every aluminium system


View our inspiration page with different homes

**MAX LIGHT**  
Uw 0.97


MODERN




STEEL



DESIGN



INVISIBLE




**PERFORMANCE LEVEL**






- Heat transfer coefficient (Uf) 0.97 W/m<sup>2</sup>K (depending on the frame-sash combination)
- Air transmission: Class 4
- Watertightness: Class E1650
- Resistance to wind: Class C5
- Burglarproof: RC2

**TECHNICAL FEATURES**

- Minimum visible width inward opening window:
  - frame: 35mm
  - pane: 35 mm
- Minimum visible width inward opening door:
  - frame: 35mm
  - pane: 68mm
- Minimum visible width outward opening door:
  - frame: 15 mm
  - pane: 88 mm

Inspiration >




Find the dealer in your area

Read the useful tips in our blog





**ALUMINIUM IS EASY TO MAINTAIN**

Choose your doors and windows carefully. Look for the optimal balance between aesthetics, functionality, insulation value and lifespan. And last but far from least: low-maintenance joinery is just as convenient. We can already tell you that aluminium is what you need. Aluminium is very easy to maintain and it never rusts. You will save time and money with the following tips.

READ MORE >

